

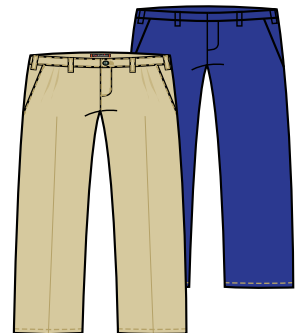


ALBERT EINSTEIN *CHARTER Elementary*

Uniform Policy

The AEACES required uniform includes:

- Boys:** Navy blue shorts or pants that fit at the waist and white or red long or short sleeve shirts with collar and AEA logo (polo shirts or Oxford shirts). Any visible undershirts must be school uniform colors and must be tucked in. **Note:** Cargo pants or baggy pants are not permitted.
- Girls:** Navy blue shorts, pants, skirts, skorts, or jumpers that fit at the waist and white or red collar long or short sleeve shirts with AEA logo (polo shirts or Oxford shirts). Any visible undershirts must be school uniform colors and must be tucked in. **Note:** Skirts, skorts, and jumpers should not be higher than three inches above the knee. Biking-style shorts need be worn under the jumpers and skirts to ensure modesty. Make up is not permitted.
- Jackets:** Navy blue jackets or sweaters with the school logo. No sweatshirts with logos other than AEA will be permitted. In the event of extreme cold temperatures, allowances will be made for non-uniform winter jackets.
- Footwear:** All students must wear closed toe shoes with non-skid soles. Sandals, boots and similar footwear are not allowed. Athletic shoes are the preferred choice of footwear. Socks and leggings must be in the uniform colors of red, white, or blue if visible.
- Accessories:** Hats with the AEA logos are permitted outside of the classroom. Students will not be permitted to wear accessories that distract from learning or that may be a safety issue. For example, long dangling earrings or necklaces, non-uniform hats, and fashion gloves are not permitted.



AEA uniforms are available from the following vendors:



French Toast
www.frenchtoast.com



Lands' End
www.landsend.com



Morgan's Monograms
www.morgansmonograms.com
(619) 589-0070
7584 University Ave,
La Mesa, CA 91942

Uniform assistance available upon request